
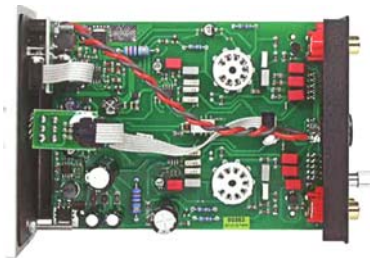


The ECC83 valves wear valve coolers that also eliminate the glass tube's tendency to be microphonic.

The Pro-Ject Tube Box DS seems to be one of those products that gently persuades the listener that its way is the right way. I could perhaps criticise it for having a warmish tonal balance and slightly softened extreme high frequencies, but that would miss the point if its innate musicality and convincing presentation of music. I found it hugely enjoyable to listen to regardless of the genre, age or condition of what I played through it. At £425 it is something of a bargain, and if you are looking for a phono stage at this price point, then look no further. Absolutely recommended. 



The dual mono circuit board with the ECC 83 (12AX7) double triode valves removed.



The back contains jumper plugs and sockets which vary the gain and capacitance, and can activate the subsonic filter.

**PRO-JECT
TUBE BOX DS
PHONOSTAGE.**
£425.00



VERDICT

Compact MM and MC phono stage with valve output circuit and a big sound.

FOR

- driving rhythms.
- fast, tuneful bass.
- multilayered imaging.

AGAINST

- could be a bit rich sounding for some systems.

www.project-audio.com