



Sesame 2.1

SCREEN SURFACES



Arctiq

Matt white front surface, fibre glass support, black-backed. Gain 1.0



GreyLight

Grey front surface, fibre glass supported, black-backed. Gain 0.75



Xpert

White front surface, black-backed. PVC free. Flame retardant (B1). Excellent surface flatness and colour temp. Gain 0.9.

PROJECTION FORMATS

1:1

The screen format is 1:1. No black borders.

4:3

The screen has 5 cm wide black borders. The format of the viewing area is 4:3.

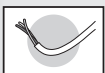
16:10

The screen has 5 cm wide black borders. The format of the viewing area is 16:10.

16:9

The screen has 5 cm wide black borders. The format of the viewing area is 16:9.

CONTROL OPTIONS

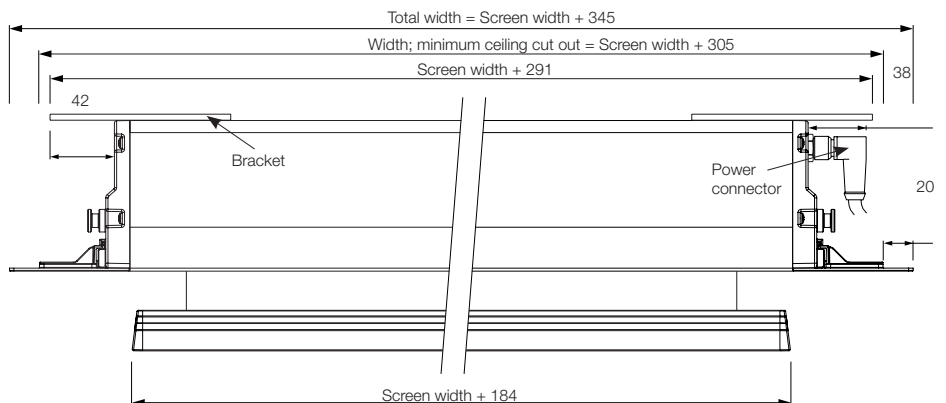


Installation

5m cable. Needs to be installed by electrician. This is included as standard.

Sesame 2.1 is an upgrade from the award winning, sophisticated recessed projection screen designed for installation in suspended or plastered ceilings. The model has a clever design of the bottom dowel which closes the case flush when the screen is not used, and the white aluminium case is equipped with unique removable end flanges for quick access and installation. The distinctive feature with a concealed drop function of screen section allows for installation in prepared ceiling cut-out later on during the construction process. The screen is stylish in its appearance with external flange profiles which are integrated with the case. Optional brackets for trouble-free installation in recessed ceilings are available.

SCREEN DIMENSIONS



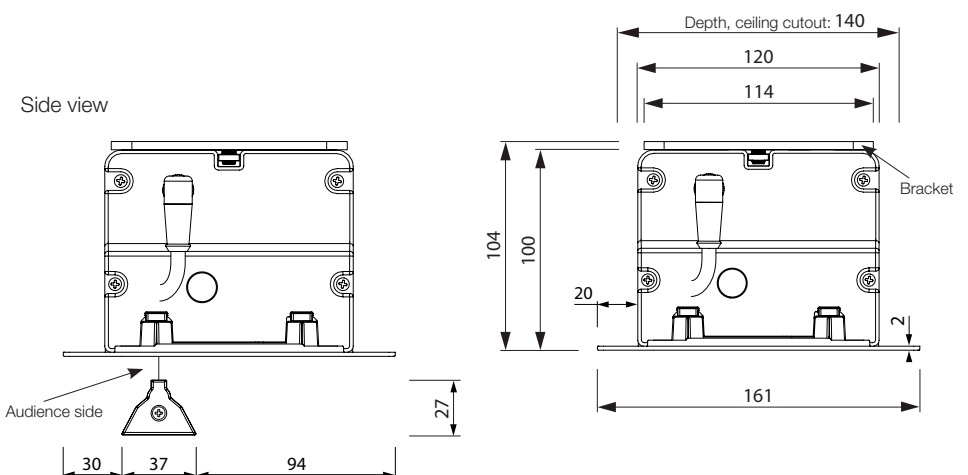
Considerations regarding cut out width

Minimum cut out width: screen width + 305

Maximum cut out width: screen width + 343

Recommended cut out width: screen width + 325

CASE DIMENSIONS



Sesame 2.1

ELECTRICAL SPECIFICATIONS

Cable Specifications

Thickness: \varnothing 7 mm
 Cable area: 4x0,5mm² , motor to control
 3x0,75mm² , control to plug
 Wires: Black - Up
 Brown - Down
 Blue - Neutral
 Green/Yellow - Ground

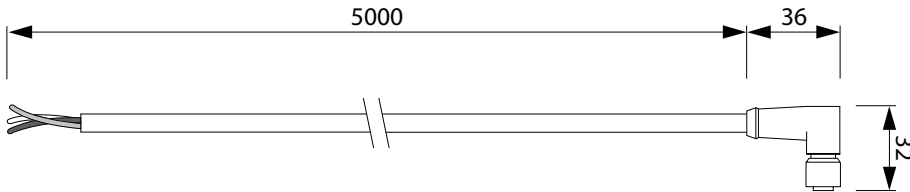
Installation cable

Part no: 210673
 Enclosed with the screen.
 Weight: 0.40kg

Motor Specifications

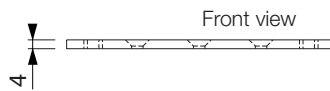
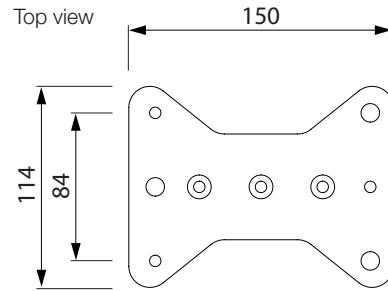
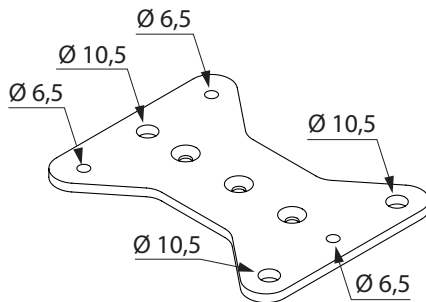
Voltage: 220 V Frequency: 50 Hz
 Power: 121 W Momentum: 6Nm
 Speed: 28 rpm Protection: IP44

The motor is grounded.

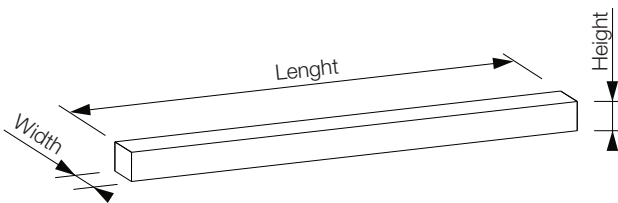


BRACKET DIMENSIONS

Brackets are included in all Sesame products.



PACKAGING DIMENSIONS



| Screen width | Box length | Box width | Box height |
|--------------|------------|-----------|------------|
| 1600 | 2040 | 245 | 250 |
| 1800 | 2240 | 245 | 250 |
| 2000 | 2440 | 245 | 250 |
| 2200 | 2640 | 245 | 250 |
| 2400 | 2840 | 245 | 250 |
| 2700 | 3140 | 245 | 250 |
| 3000 | 3440 | 245 | 250 |