



*Sonus faber*



IL CREMONESE EX3ME - AUTOMOBILI  
LAMBORGHINI EDITION

EMBARGO NOTICE  
STRICTLY CONFIDENTIAL UNTIL AUGUST 13th, 2025.

All information, images, and materials provided are strictly under embargo until August 13th, 2025.  
No publication, distribution, or disclosure is permitted before this date.



## IL CREMONESE EX3ME - AUTOMOBILI LAMBORGHINI EDITION

### VALUE PROPOSITION

- This speakers is the first commercial product born from the partnership between Sonus faber and Automobili Lamborghini. A fusion of Italian acoustic mastery and automotive boldness, it brings together two worlds driven by performance, design, and uncompromising excellence.
- This special edition retains all the uncompromising acoustic features of the original Cremonese Ex3me from Sonus faber's Reference Collection — a benchmark in high-fidelity listening.
- It's conceived as a work of art and a bold personal statement. Designed for a highly exclusive audience, it resonates with those who see objects as an extension of their identity and a reflection of their passion for craftsmanship and perfection.



Sonus faber

IL CREMONESE

.Sf.

FERRARI



IL CREMONESE EX3ME - AUTOMOBILI  
LAMBORGHINI EDITION

EMBRACING VISTA

Drawing inspiration from Lamborghini's iconic design language, the speaker features sharp lines and dynamic forms that mirror the bold aesthetics of the super sports cars.

The open-top design reveals the intricate crossover network—the 'engine' of the speaker—much like Lamborghini showcases its powerful engines under transparent hoods.



## IL CREMONESE EX3ME - AUTOMOBILI LAMBORGHINI EDITION

### ICONIC FACE PLUG

The Automobili Lamborghini shield, boldly centered on the face plug, is instantly recognizable—a symbol of power, prestige, and uncompromising performance.

On the Automobili Lamborghini Edition, it becomes more than a logo: it's a sculptural signature that embodies decades of fierce elegance and automotive heritage. It stands as a statement of identity, commanding attention and reflecting the untamed spirit shared by both Automobili Lamborghini and Sonus faber.

IL CREMONESE EX3ME - AUTOMOBILI

LAMBORGHINI EDITION

SIGNATURE REAR DESIGN

On the back, **three sculpted vents** echo Lamborghini's unmistakable design language—where every line serves both form and performance. This powerful visual detail reinforces the speaker's connection to the world of high-performance supercars.

Each unit is individually numbered and part of a **strictly limited run of just 50 pairs**, leaving an indelible mark on the future. A true testament to exclusivity, Italian craftsmanship, and timeless design.





## IL CREMONESE EX3ME - AUTOMOBILI LAMBORGHINI EDITION

### STORYTELLING

- Limited to just **50 numbered pairs**, this speaker is more than a product—it's a collectible masterpiece. It channels the full acoustic power of Sonus faber's Reference Collection through a design that pays tribute to Lamborghini's most daring supercars.
- The speaker's aerodynamic lines and open-top architecture echo Lamborghini's iconic design language. Available in legendary finishes like **Giallo Countach**, **Arancio Egon**, **Blu Marinus Matte**, **Verde Mercurius**, and **Nero Nemesis Matte**, every detail nods to the aesthetics of motion and precision.









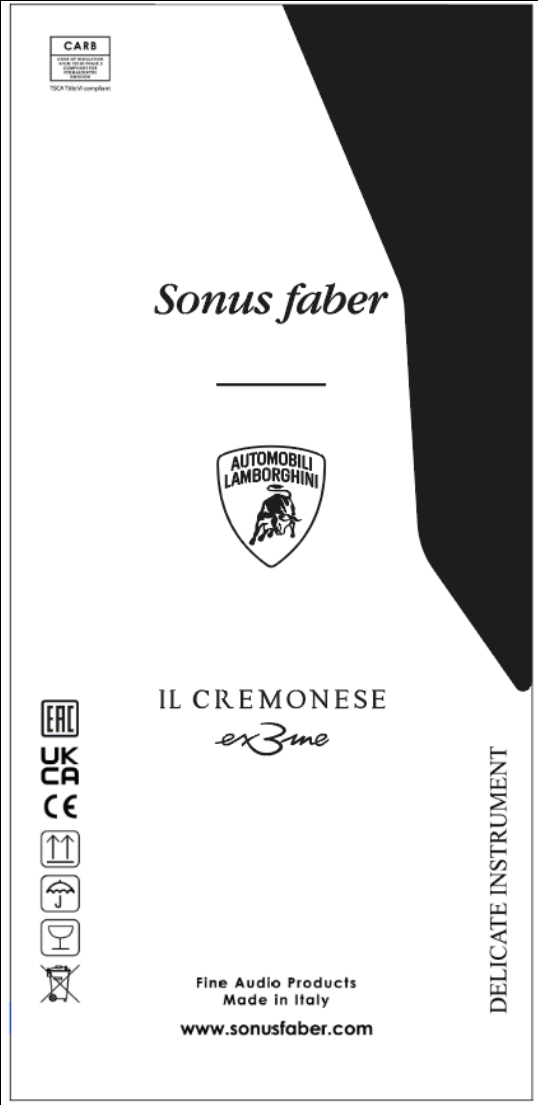


IL CREMONESE EX3ME - AUTOMOBILI  
LAMBORGHINI EDITION  
DEDICATED PACKAGING



17 mm

17 mm

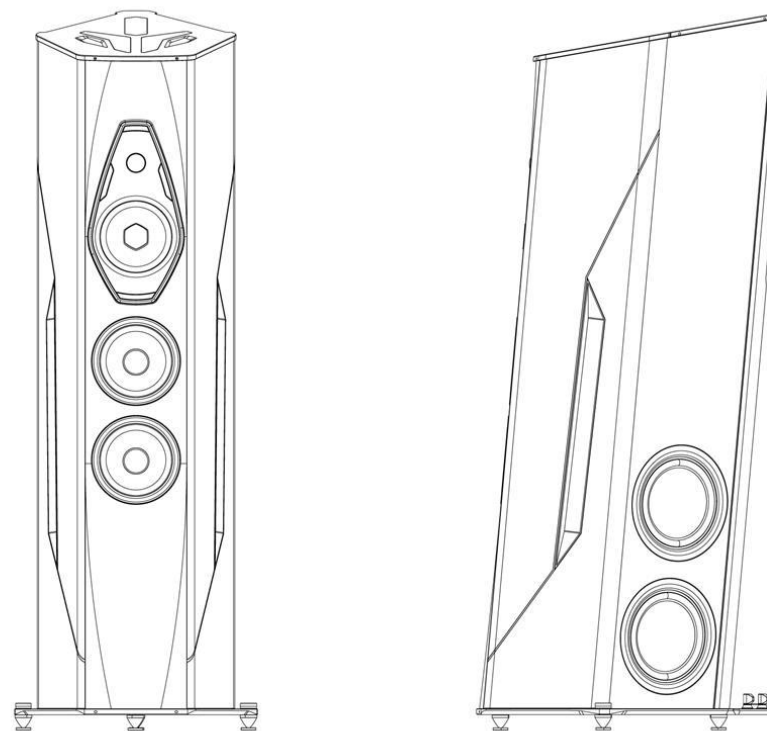


The “Automobili Lamborghini” and “Automobili Lamborghini Bull and Shield” trademarks, copyrights, designs and models are used under license from Automobili Lamborghini S.p.A, Italy.

System	3.5 way, full para-aperiodic vented box
Loudspeakers	<ul style="list-style-type: none"> <li>• Tw: Ø 30 mm, Diamond Like Carbon Beryllium dome diaphragm.</li> <li>• Md: Ø 180 mm, Neodymium Magnet System.</li> <li>• W: Ø 2x180 mm.</li> <li>• Sw: Ø 2x220 mm Nanocarbon Fiber/Nomex</li> <li>• Honeycomb Long Throw Subwoofer.</li> </ul>
Crossover Points	80, 250, 2500 Hz. Premium High End components
Frequency Response	25 Hz – 35000 Hz
Sensitivity	92 dB SPL (2.83V/1 m)
Nominal Impedance	4 Ohm
Recommended Amplifier Power	100W - 800W, undistorted signal
Connectivity	4 connectors binding post: Mid-Hi, Low
Product Dimensions	1450 x 490 x 636 mm / each 57 x 19.3 x 25 in / each
Dimensions with Packaging	1770 x 600 x 800 mm / each 69.7 x 23.6 x 31.5 in / each
Weight	84 Kg / each 185 lb / each
Packaging Weight	123.5 Kg / each 272.3 lb / each
SMRP	€ 125,000 / \$ 130,000

## IL CREMONESE EX3ME - AUTOMOBILI LAMBORGHINI EDITION

### TECHNICAL SPECIFICATION





## IL CREMONESE EX3ME - AUTOMOBILI LAMBORGHINI EDITION

### TIME TO MARKET

Il Cremonese Ex3me will be available for orders from  
**August 13<sup>th</sup>, 2025** via the dedicated form on our  
website:

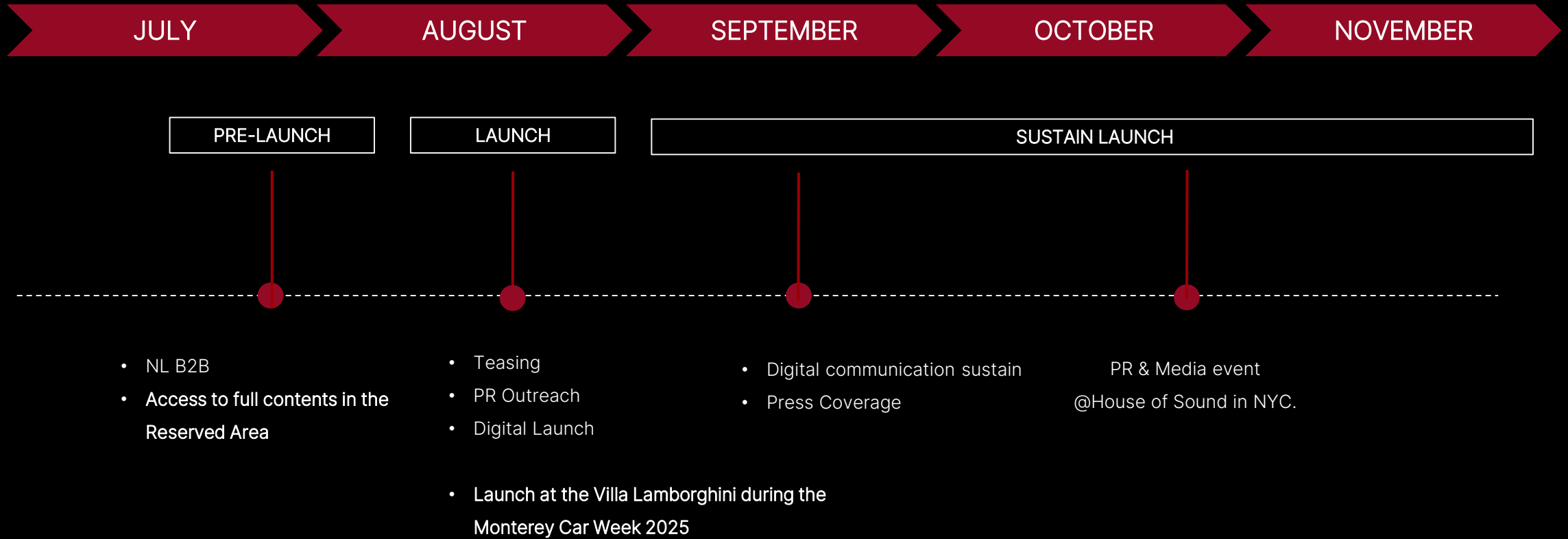
[INQUIRE FORM](#)

Due to the exclusive nature and handcrafted production of Il Cremonese Ex3me - Automobili Lamborghini, each unit is made to order. A minimum lead time of **3 months** is required from the confirmation of the order to final delivery.

·Sf·

IL CREMONESE EX3ME - AUTOMOBILI  
LAMBORGHINI EDITION

TIMELINE





IL CREMONESE EX3ME - AUTOMOBILI  
LAMBORGHINI EDITION

MARKETING TOOL KIT

*Sonus faber* | 

**IL CREMONESE EX3ME - AUTOMOBILI LAMBORGHINI EDITION**  
TECHNICAL SPECIFICATIONS

SYSTEM	3.5 way, full para-aperiodic vented box
LOUDSPEAKERS	<ul style="list-style-type: none"> <li>• Tw: Ø 30 mm, Diamond Like Carbon Beryllium dome diaphragm.</li> <li>• Mid: Ø 150 mm, Neodymium Magnet System.</li> <li>• W: Ø 2 x 180 mm.</li> <li>• Sw: Ø 2 x 230 mm Nanocarbon Fiber/Nomex Honeycomb Long Throw Subwoofer.</li> </ul>
CROSSOVER POINT	80, 250, 2500 Hz Premium High-End components
FREQUENCY RESPONSE	25 Hz – 35000 Hz
SENSITIVITY	92 dB SPL (2.83V/1 m)
NOMINAL IMPEDANCE	4 Ohm
RECOMMENDED POWER AMPLIFIER	100W - 800W, undistorted signal
CONNECTIVITY	4 connectors binding post, Mid-Hi, Low
PRODUCT DIMENSIONS (H x W x D)	1450 x 490 x 636 mm / 57 x 19.3 x 25 in / each
DIMENSIONS WITH PACKAGING (H x W x D)	1770 x 800 x 800 mm / 69.7 x 23.6 x 31.5 in / each
WEIGHT	84 kg / each 185 lb / each
PACKAGING WEIGHT	123.5 kg / each 272.3 lb / each
CABINET	<ul style="list-style-type: none"> <li>• Rhomboidal diamond shape</li> <li>• Carbon fiber / Lamborghini paint</li> <li>• Ceramic® Black Ade</li> <li>• Black aluminum</li> </ul>

TECH  
SPECS

# IL CREMONESE EX3ME - AUTOMOBILI LAMBORGHINI EDITION

## MARKETING ASSETS

Il Cremonese Ex3me - Automobili Lamborghini Edition is supported by a complete range of materials. Click on the relative buttons to access the Distributor Dashboard and view and download the material.

- Materials are provided for digital and print use.
- Open file is available on request for translations.
- Graphic support is available on request.

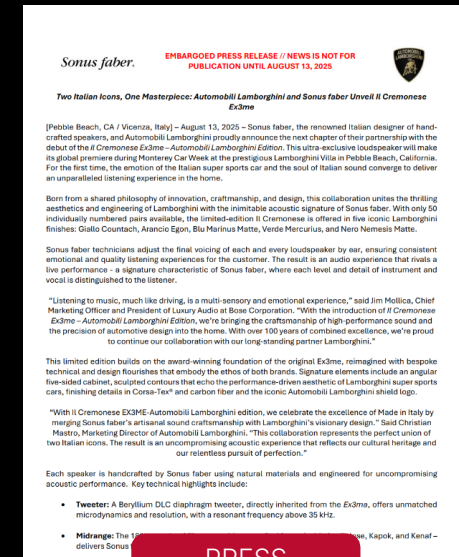
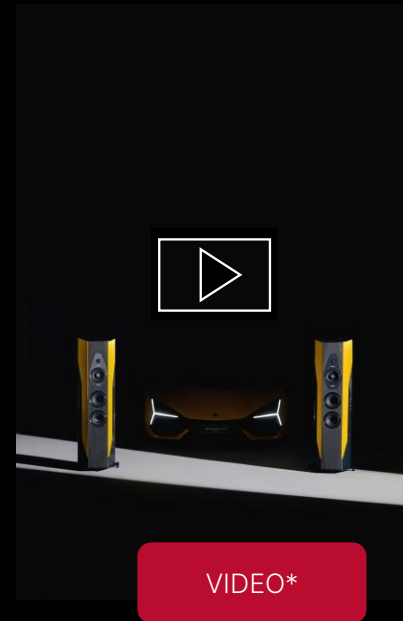
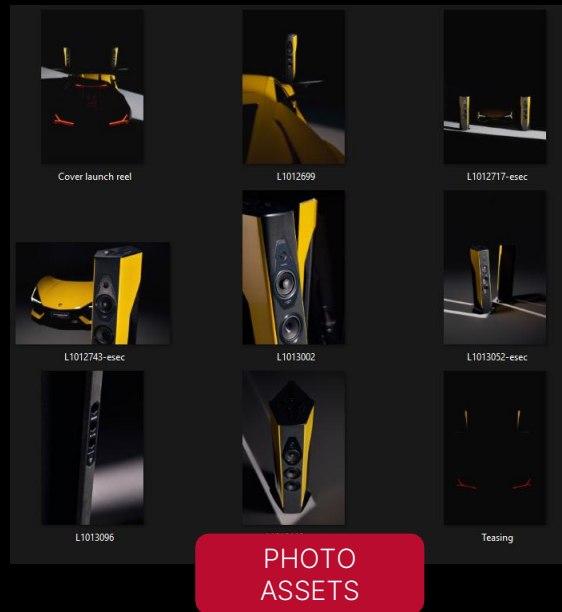


TECH  
DRAWINGS



# IL CREMONESE EX3ME - AUTOMOBILI LAMBORGHINI EDITION

## MARKETING ASSETS



\* Available in 16:9, 9:16 and 4:5 formats.

## IL CREMONESE EX3ME - AUTOMOBILI LAMBORGHINI EDITION

When Sonus faber and Automobili Lamborghini unite, Italian craftsmanship meets extreme performance. Il Cremonese Ex3me – Automobili Lamborghini Edition is the result: a radical fusion of sound and design, limited to 50 pairs. More than a speaker, it's a bold statement of innovation, identity, and modern luxury

### TARGET AUDIENCE

Il Cremonese Ex3me - Automobili Lamborghini Edition is not for everyone—and that's exactly the point.

The **"Visionary Circle"**: is a select group of individuals who see beyond functionality, seeking objects that embody purpose, beauty, and innovation.

Owning the Il Cremonese Ex3me – Automobili Lamborghini Edition is a statement of intent. It tells the world that you are not merely a consumer of luxury, you are a curator of excellence. Whether you're already a passionate Sonus faber collector or a Lamborghini enthusiast with a taste for the exceptional, this creation speaks your language.

**Launch Time** August 2025

**Retail Price** € 125.000 - \$ 130,000

**Finishes**  
Giallo Countach  
Arancio Egon  
Blu Marinus Matte  
Verde Mercurius  
Nero Nemesis Matte

**Collection** Licencing Partnership



### EMBRACING VISTA

Sharp lines and a dynamic open-top design echo Lamborghini's bold aesthetics, revealing the speaker's internal "engine" like a supercar's transparent hood.



### FACE PLUG

The Automobili Lamborghini shield, boldly centered on the face plug, becomes a sculptural signature—an icon of power and prestige that reflects the untamed spirit of both brands



### SIGNATURE REAR DESIGN

Three sculpted rear vents recall Lamborghini's signature design, blending form and function. Individually numbered and limited to 50 pairs, each speaker is a rare expression of Italian craftsmanship and exclusivity.



GIALLO COUNTACH

ARANCIO EGON

VERDE MERCURIUS



BLU MARINUS MATTE

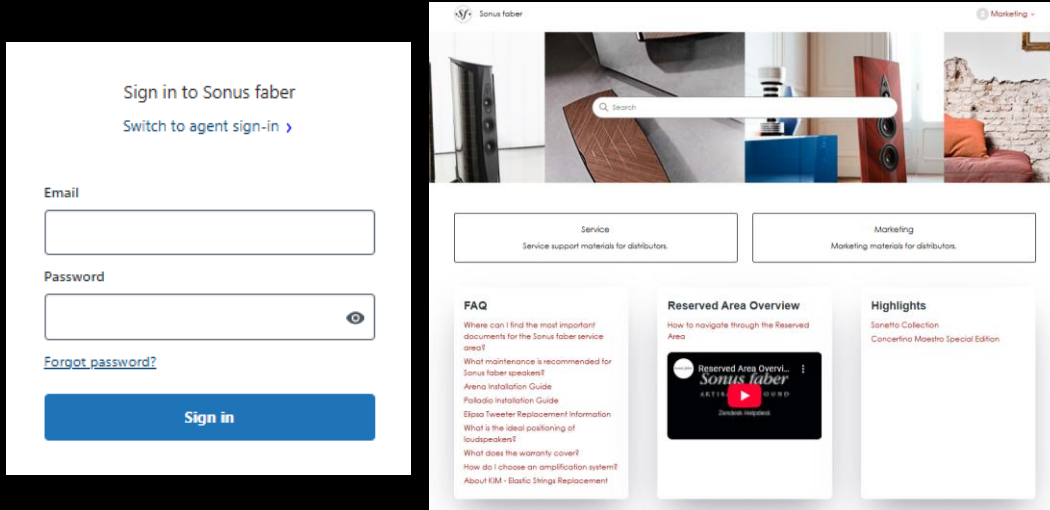


NERO NEMESIS MATTE

# DISTRIBUTOR PORTAL

All assets contained in this document are available to download from the Sonus faber Distributor Dashboard at this link:

<https://sonusfabersupport.zendesk.com/>



Please note: a login to Sf Dashboard is required.  
Contact [bavitabile@sonusfaber.com](mailto:bavitabile@sonusfaber.com) for a new account activation or issue with the log in.

# CONTACTS

Sales Contact

**Bill Lee**

Luxury Audio, Global Sales Vice President

[Bill\\_Lee@bose.com](mailto:Bill_Lee@bose.com)

[\(329\) 222-2554](tel:(329)222-2554)

For Marketing and Brand related request:

**Marta Vecellio Reane**

Sonus faber Global Marketing Manager

[mvecellio@sonusfaber.com](mailto:mvecellio@sonusfaber.com)

For Website, Social Media and digital requests:

**Beatrice Avitabile**

Sonus faber Digital Marketing Specialist

[bavitabile@sonusfaber.com](mailto:bavitabile@sonusfaber.com)

For Factory Tours and training request:

**Lorenzo Valè**

Sonus faber Experience Manager

[lvale@sonusfaber.com](mailto:lvale@sonusfaber.com)

For PR requests

**Kate Nelson**

[Kate\\_nelson@bose.com](mailto:Kate_nelson@bose.com)



Thank you